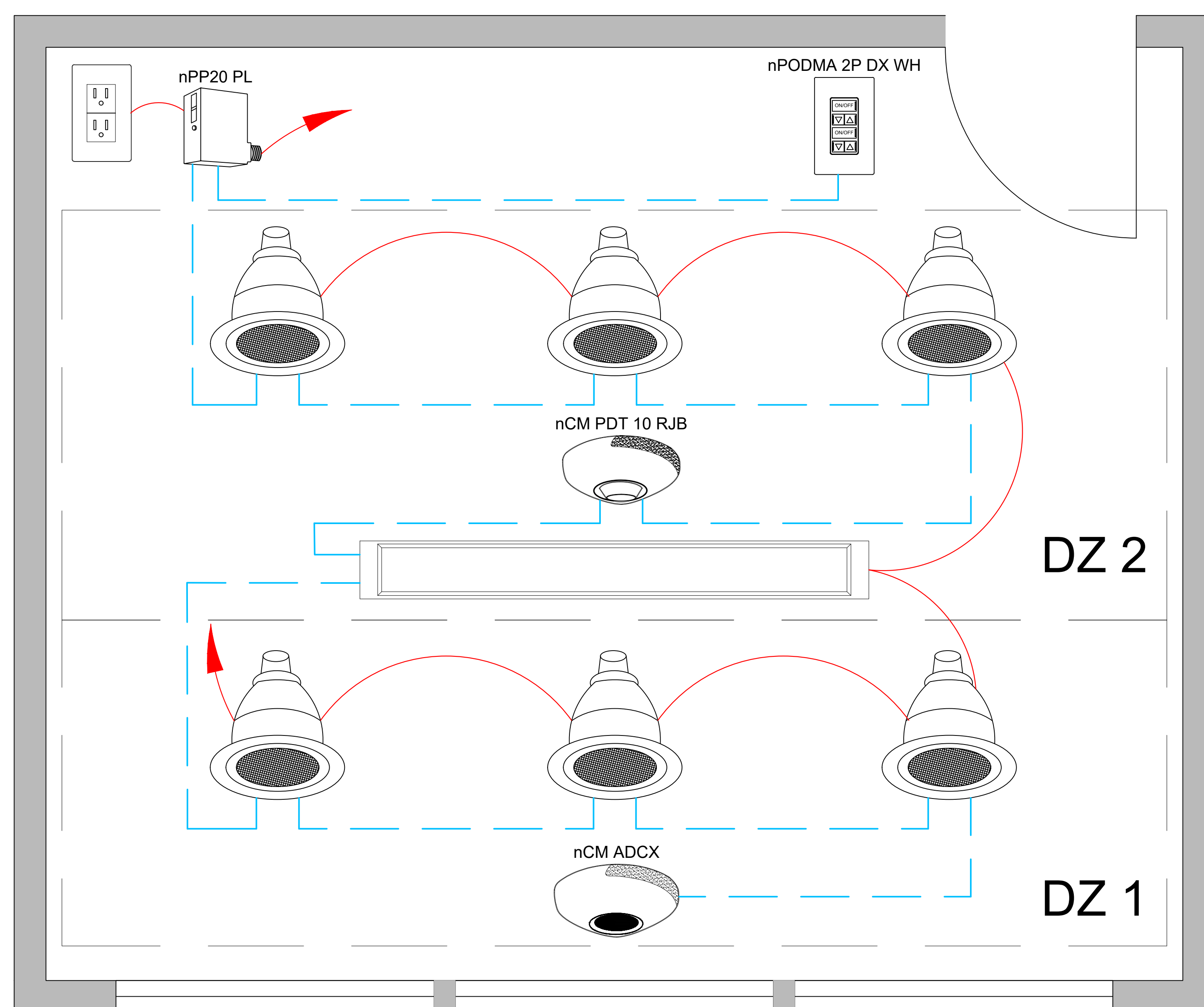


**nLIGHT:**  
**CONFERENCE - nLIGHT ENABLED**



**DIAGRAM LEGEND**

- CAT5
- LINE VOLTAGE WIRES
- LINE POWER



FOR nLIGHT DESIGN ASSISTANCE OR A COMPLETE BOM ON PROJECT -  
 CONTACT SDLA @ [CONTROLS@SDLTG.COM](mailto:CONTROLS@SDLTG.COM) OR (858)505-1055

**SUPPORTS THE FOLLOWING REQUIREMENTS:**

- ✓ **MANUAL AREA CONTROLS**  
(SECTION 130.1(a))
- ✓ **MULTI-LEVEL LIGHTING CONTROLS**  
(SECTION 130.1(b))
- ✓ **SHUT-OFF CONTROLS**  
(SECTION 130.1(e))
- ✓ **AUTOMATIC DAYLIGHTING CONTROLS**  
(SECTION 130.1(d))
- ✓ **DEMAND RESPONSE (ADR) CONTROLS**  
(SECTION 130.1(e))
- ✓ **CONTROLS INTERACTIONS**  
(SECTION 130.1(f))
- ✓ **CONTROLLED RECEPTACLES**  
(SECTION 130.5(d))

SEE SDLA BASIS OF DESIGN TO COMPLY WITH TITLE 24 SECTION 120.8(c)