

**nLIGHT:
CONFERENCE - POWERPACKS**

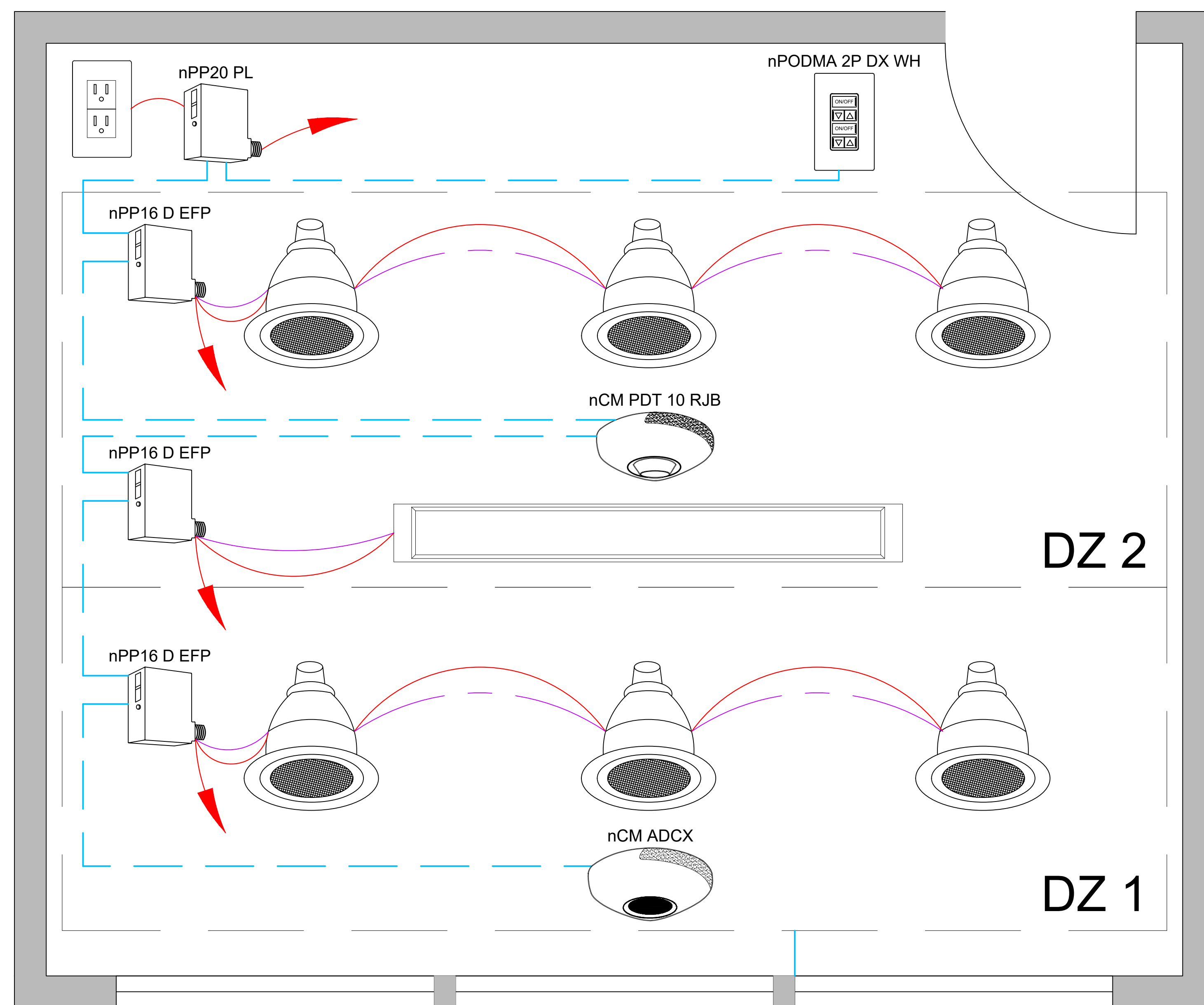


DIAGRAM LEGEND

- CAT5
- LINE VOLTAGE WIRES
- 0-10VDC WIRES
- ➔ LINE POWER



FOR nLIGHT DESIGN ASSISTANCE OR A COMPLETE BOM ON PROJECT - CONTACT SDLA @ CONTROLS@SDLTG.COM OR (858)505-1055

SUPPORTS THE FOLLOWING REQUIREMENTS:

- ✓ MANUAL AREA CONTROLS
(SECTION 130.1(a))
- ✓ MULTI-LEVEL LIGHTING CONTROLS
(SECTION 130.1(b))
- ✓ SHUT-OFF CONTROLS
(SECTION 130.1(e))
- ✓ AUTOMATIC DAYLIGHTING CONTROLS
(SECTION 130.1(d))
- ✓ DEMAND RESPONSE (ADR) CONTROLS
(SECTION 130.1(e))
- ✓ CONTROLS INTERACTIONS
(SECTION 130.1(f))
- ✓ CONTROLLED RECEPTACLES
(SECTION 130.5(d))

SEE SDLA BASIS OF DESIGN TO COMPLY WITH TITLE 24 SECTION 120.8(c)