

nLIGHT: LARGE OFFICE - POWERPACKS

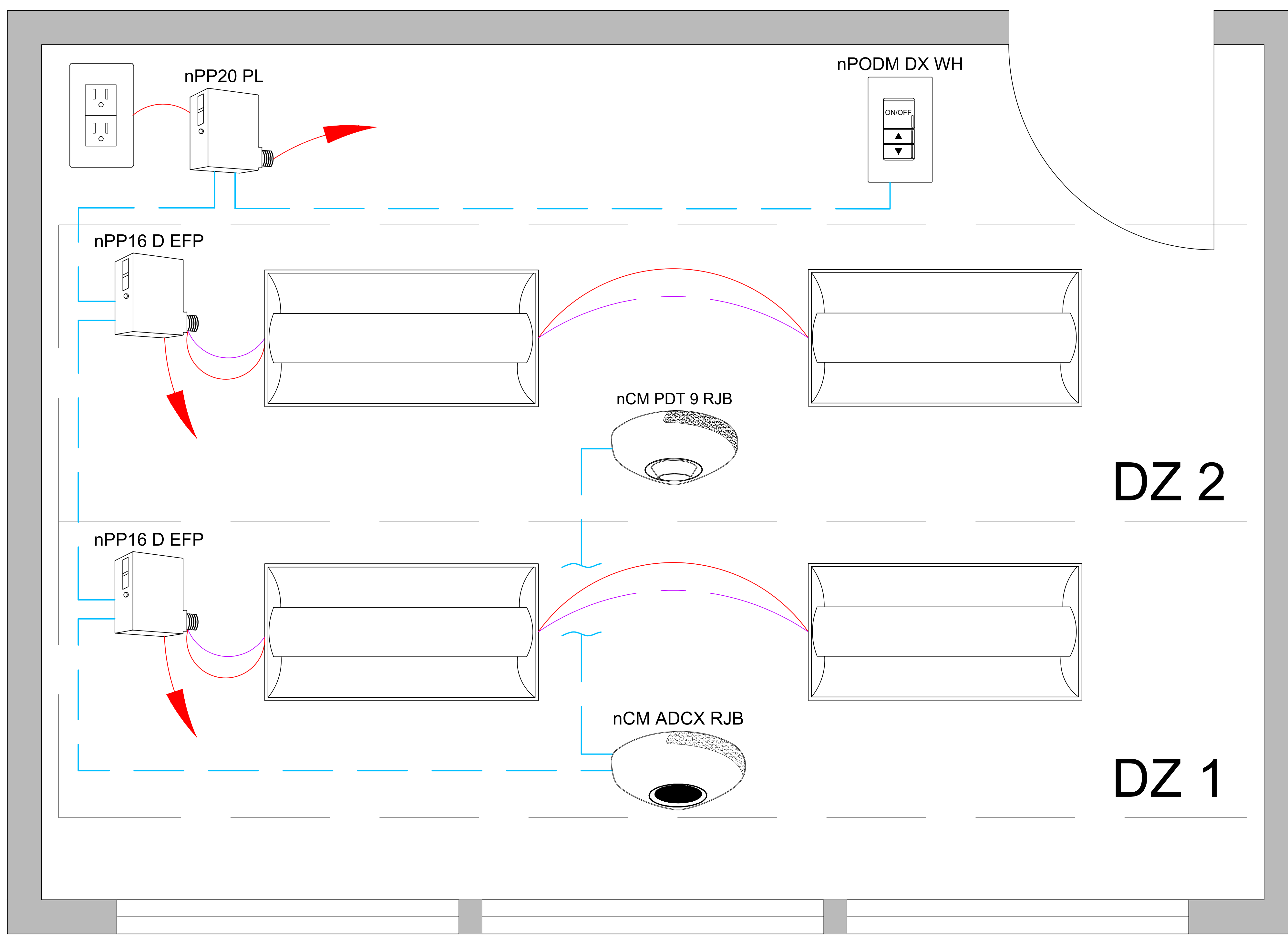


DIAGRAM LEGEND

- CAT5
- LINE VOLTAGE WIRES
- 0-10VDC WIRES
- LINE POWER



SUPPORTS THE FOLLOWING REQUIREMENTS:

- ✓ MANUAL AREA CONTROLS
(SECTION 130.1(a))
- ✓ MULTI-LEVEL LIGHTING CONTROLS
(SECTION 130.1(b))
- ✓ SHUT-OFF CONTROLS
(SECTION 130.1(c))
- ✓ AUTOMATIC DAYLIGHTING CONTROLS
(SECTION 130.1(d))
- ✓ DEMAND REPOSE (ADR) CONTROLS
(SECTION 130.1(e))
- ✓ CONTROLS INTERACTIONS
(SECTION 130.1(f))
- ✓ CONTROLLED RECEPTACLES
(SECTION 130.5(d))

SEE SDLA BASIS OF DESIGN TO COMPLY WITH TITLE 24 SECTION 120.8(c)